

FOR LEASE: POINTE VIEW

4837 Darrow Road, Suites 101 & 102, Stow, OH 44224

LEASING SUMMARY

Building Size:	Approx. 3,772 SF	Utilities:	Separately Metered/Tenants Pay
Base Rental Rate:	\$12/PSFPY	Year Built:	1995
Operating Expense:	\$3.05/PSFPY	Zoning:	Office Use
Total:	\$4,731.39/mo	Parking:	Ample



LOCATION

Looking for a new office space that will impress clients and provide a new "Point of View" for your business? Look no further than 4837 Darrow Road, Suites 101 & 102, Stow, OH 44224. Located in the "Pointe View" office condominium park on the East Side of Darrow Road, South of Norton Road.



The information contained herein is from sources deemed reliable but no guarantee is made herein. Confirm all data through independent sources

PAPPAS REALTY CO.

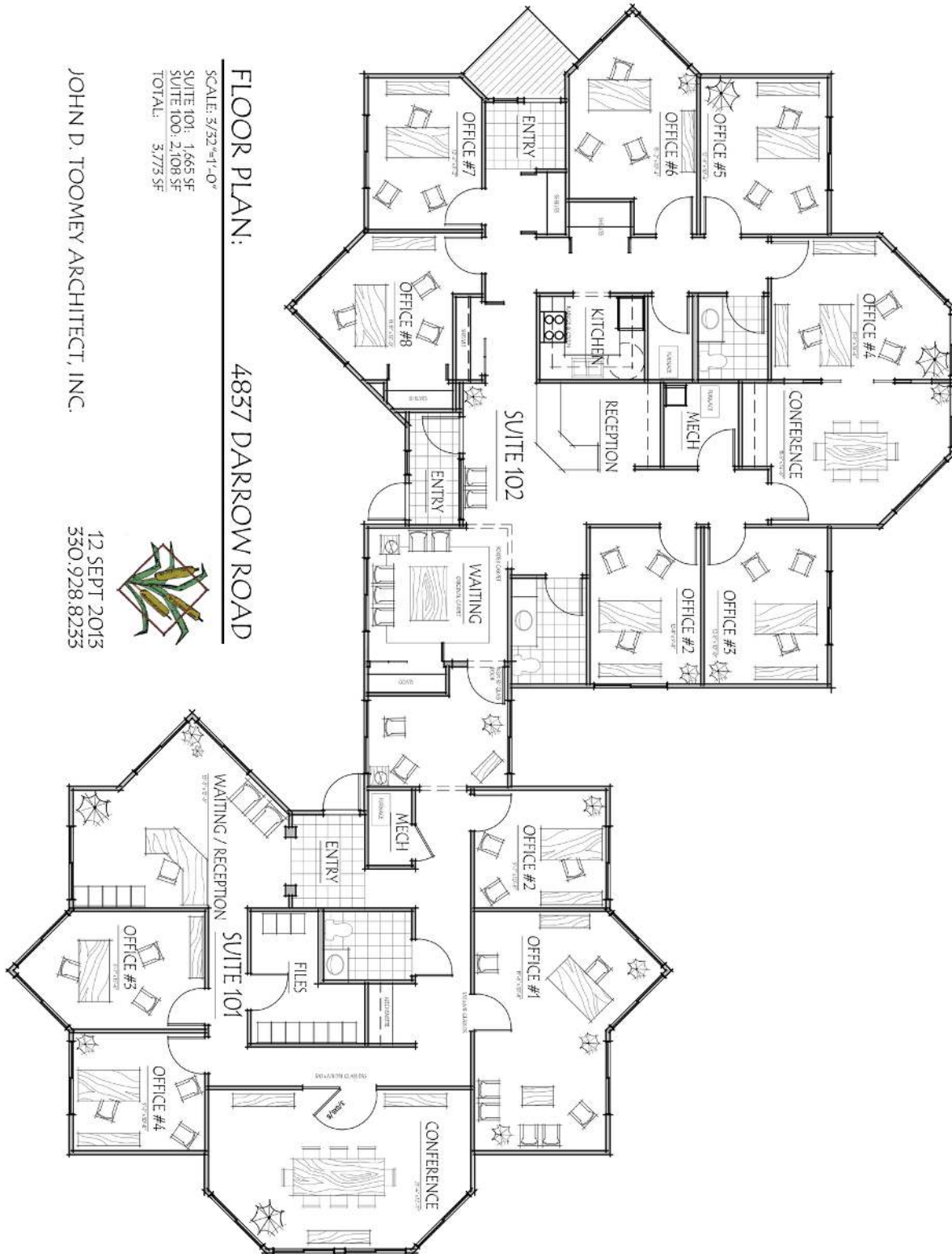
Patrick Powers
President, Broker, REALTOR
330.990.1839
pat@pappasrealtyco.com

Stephen Powers
Vice President, REALTOR
330.990.1838
steve@pappasrealtyco.com

FOR LEASE: POINTE VIEW

4837 Darrow Road, Suites 101 & 102, Stow, OH 44224

FLOOR PLAN



PAPPAS REALTY CO.

Patrick Powers
President, Broker, REALTOR
330.990.1839
pat@pappasrealtyco.com

Stephen Powers
Vice President, REALTOR
330.990.1838
steve@pappasrealtyco.com