

FOR LEASE: Retail Storefront Stow, OH

4411 Kent Rd, #1, Stow, OH 44224

Summary

Lease Price:	\$1,250/mo	Utilities:	Tenant Pays Gas/Electric/Water
Unit Size:	Approx. 1,040 SF	Use:	Retail
CAM:	\$100/mo	Parking:	"in-common"
RE Taxes:	\$98/mo	Available:	July 1, 2024



Details

This location is just west of Marsh Rd on the north side Rt.59 (Kent Rd) in Stow, OH, just behind the Midas. High traffic commercial area in Stow, OH approx. 18,000 VPD on Kent Rd.



The information contained herein is from sources deemed reliable but no guarantee is made herein. Confirm all data through independent sources

PAPPAS REALTY CO.

Patrick Powers
President, Broker
330.990.1839
pat@pappasrealtyco.com

Stephen Powers
Vice President
330.990.1838
steve@pappasrealtyco.com

FOR LEASE: Retail Storefront Stow, OH

4411 Kent Rd, #1, Stow, OH 44224

Photos



Front of building



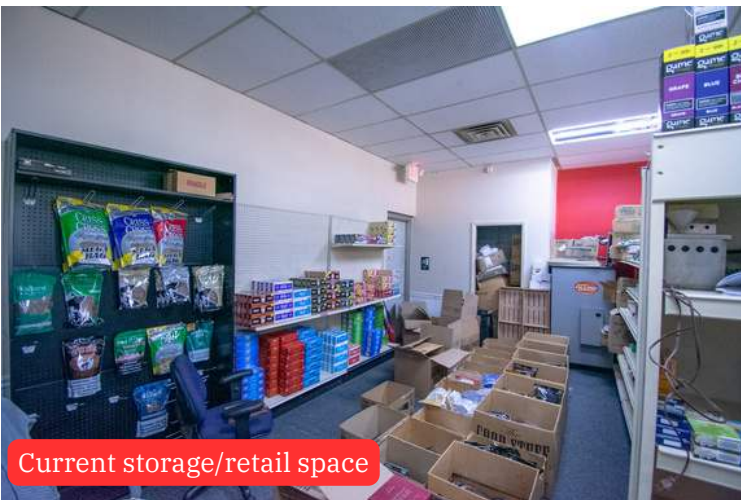
Retail space



Retail space



Storefront



Current storage/retail space



Office/storage

The information contained herein is from sources deemed reliable but no guarantee is made herein. Confirm all data through independent sources

PAPPAS REALTY CO.

Patrick Powers
President, Broker
330.990.1839
pat@pappasrealtyco.com

Stephen Powers
Vice President
330.990.1838
steve@pappasrealtyco.com

Office: 330.762.0535 Email: admin@pappasrealtyco.com Website: www.pappasrealtyco.com

